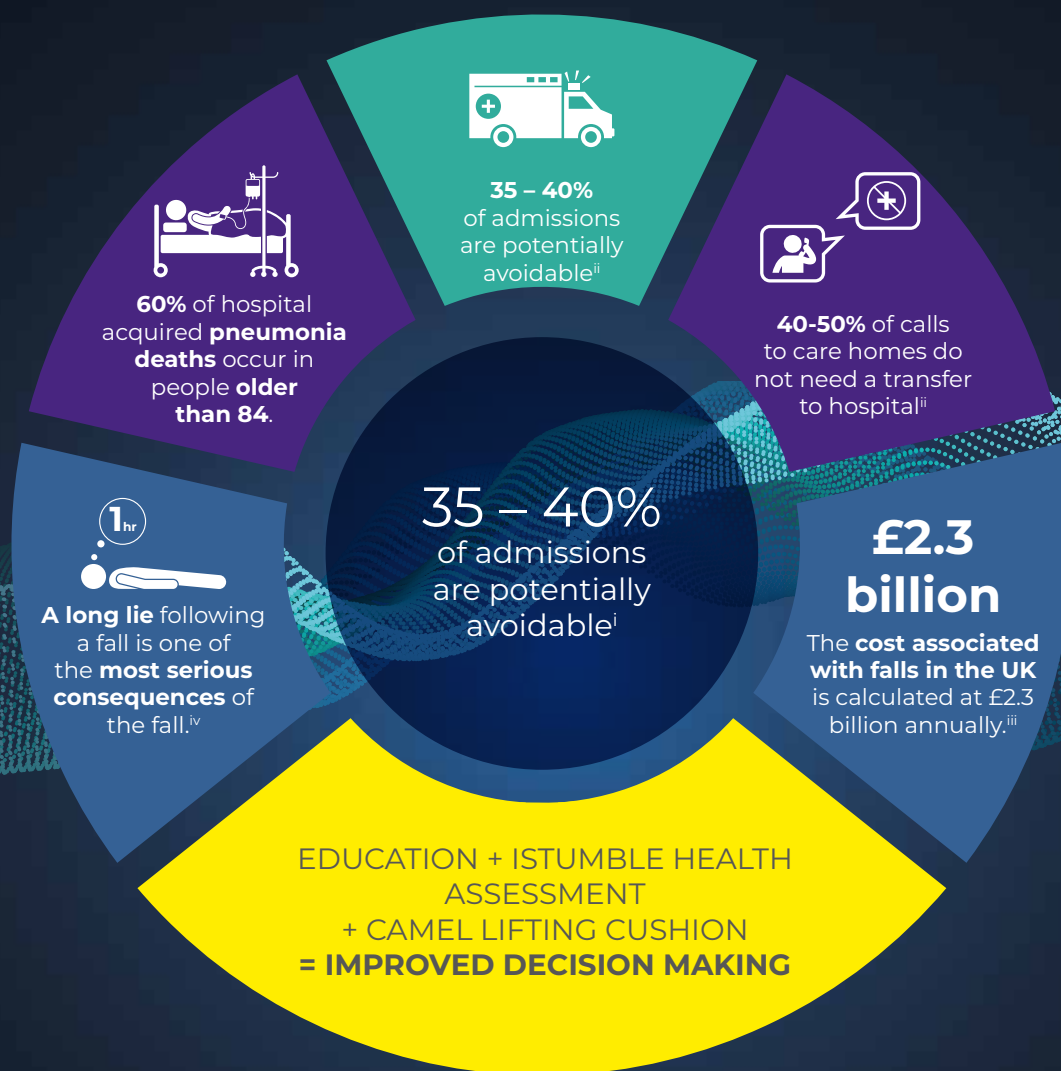


# Avoiding Hospital Admissions

185,000 emergency admissions to hospital a year are from care home residents.<sup>i</sup>



A care homes post fall management pilot project was initiated by Aneurin Bevan Health Board in 2017

## The results<sup>v</sup>

**36%**  
reduction in A&E  
attendances

**27%**  
reduction in hospital  
conveyances

**7%**  
reduction in hospital  
admissions

<sup>i</sup> NHS Long Term Plan

<sup>ii</sup> WAST

<sup>iii</sup> Health Inspectorate Wales, Review of Integrated Care: Focus on Falls 2019

<sup>iv</sup> Kate Sheehan, The OT Service, Post Falls Management

<sup>v</sup> Angela Powell, Clinical Lead Quality & Patient Safety, Aneurin Bevan University Health Board